

ARDEN P.U.D. PLAT 1

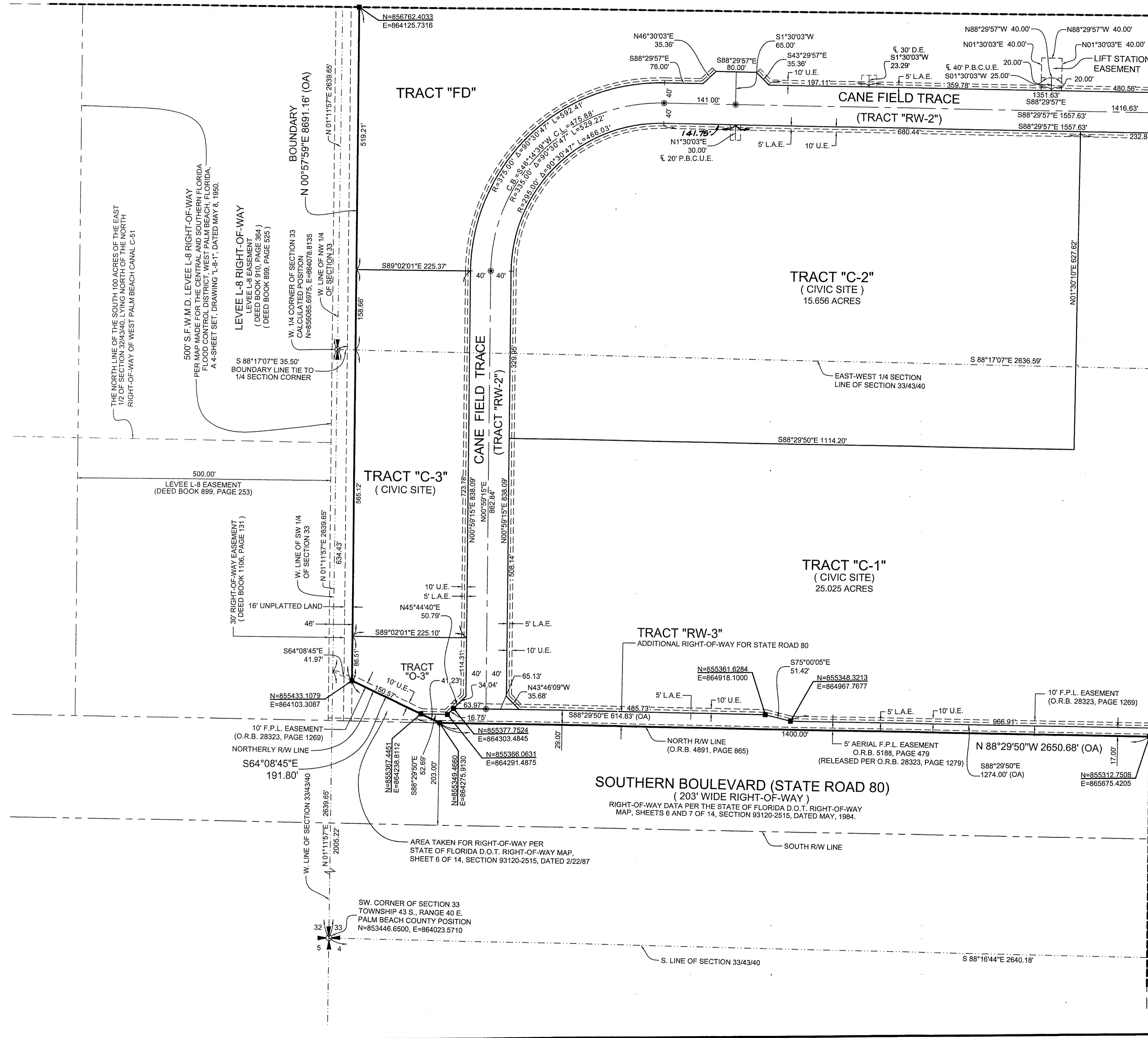
BEING A PARCEL OF LAND, LYING IN SECTIONS 21, 22, 27, 28, 33 AND 34, TOWNSHIP 43 SOUTH, RANGE 40 EAST, PALM BEACH COUNTY, FLORIDA.

SHEET 3 OF 20

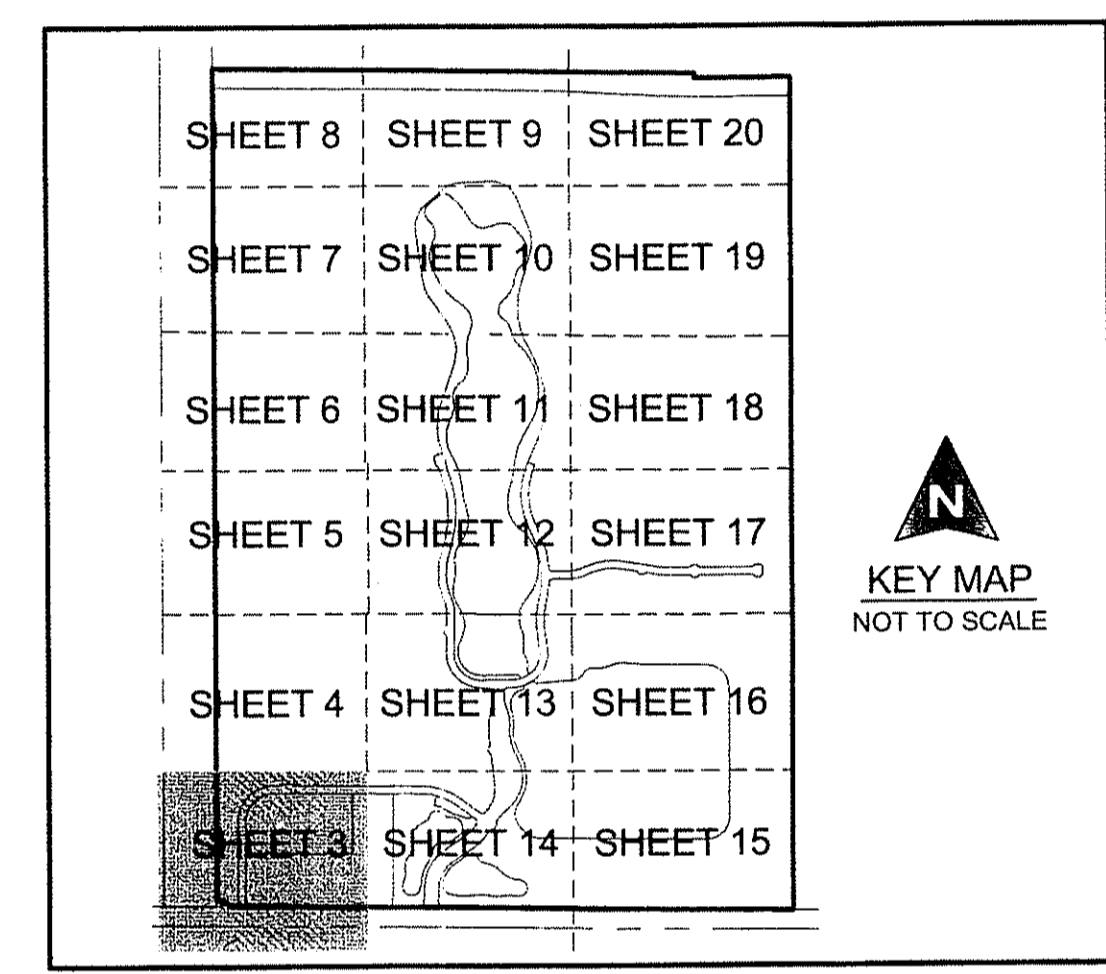
MATCH TO SHEET 4

34

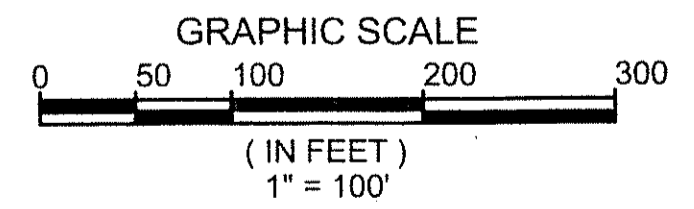
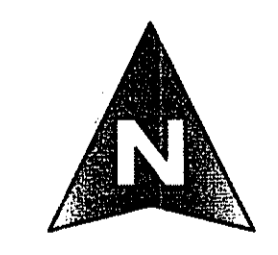
COUNTY OF PALM BEACH)
 STATE OF FLORIDA) SS
 THIS PLAT WAS FILED FOR RECORD AT _____ M. THIS DAY OF _____ 2016, AND DULY RECORDED IN PLAT BOOK NO. _____ ON PAGE _____ THRU _____
 SHARON R. BOCK,
 CLERK AND COMPTROLLER
 BY: _____, D.C.



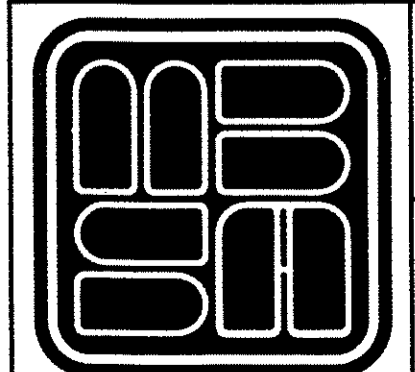
MATCH TO SHEET 14



COORDINATE NOTE:
 STATE PLANE COORDINATES SHOWN ARE GRID DATUM, NAD 83 1990 ADJUSTMENT, FLORIDA EAST ZONE, COORDINATE SYSTEM 1983 STATE PLANE, TRANSVERSE MERCATOR PROJECTION
 LINEAR UNIT = US SURVEY FEET
 ALL DISTANCES ARE GROUND
 SCALE FACTOR = 0.99999219
 GROUND DISTANCE X SCALE FACTOR = GRID DISTANCE
 BEARINGS AS SHOWN HEREON ARE GRID DATUM, NAD 83 1990 ADJUSTMENT, FLORIDA EAST ZONE.



SHEET 3 OF 20



MICHAEL B. SCHORAH & ASSOCIATES, INC.
 1850 FOREST HILL BLVD., SUITE 206
 WEST PALM BEACH, FLORIDA 33406
 EB# 2438 TEL. (561) 966-0080 FAX. (561) 642-9726 LB# 2438

ARDEN P.U.D. PLAT 1